



This lightweight, dual-color cardigan layers beautifully and has a timeless appeal. An open front and front and back seaming details at the waist give it sophistication.

- 7.5-ounce, 60/40 cotton/poly
- Shawl collar
- Raglan sleeves
- Side seam pockets

CARE INSTRUCTIONS

Machine wash cold. Tumble dry low remove promptly. Non-chlorine bleach only. Do not dry clean. Low iron if needed.

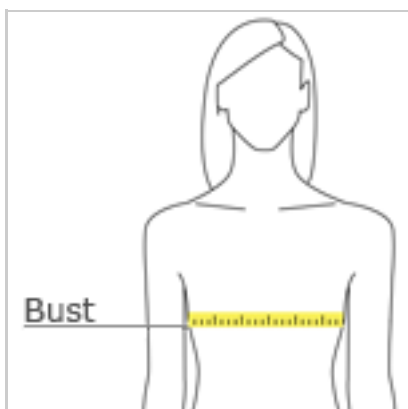


front



back

HOW TO MEASURE



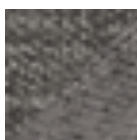
BUST

With arms down at sides, measure around the upper body, under arms and around the fullest part of the bust.

SIZE CHART

	XS	S	M	L	XL	XXL	3XL	4XL
Size	2	4/6	8/10	12/14	16/18	20/22	24/26	28/30
Bust	32-34	35-36	37-38	39-41	42-44	45-47	48-51	52-55

COLOR INFORMATION



Charcoal Heather/
Medium Heather
Grey



Deep Black/
Charcoal Heather



Estate Blue
Heather/ Charcoal
Heather



Medium Heather
Grey/ Charcoal
Heather